

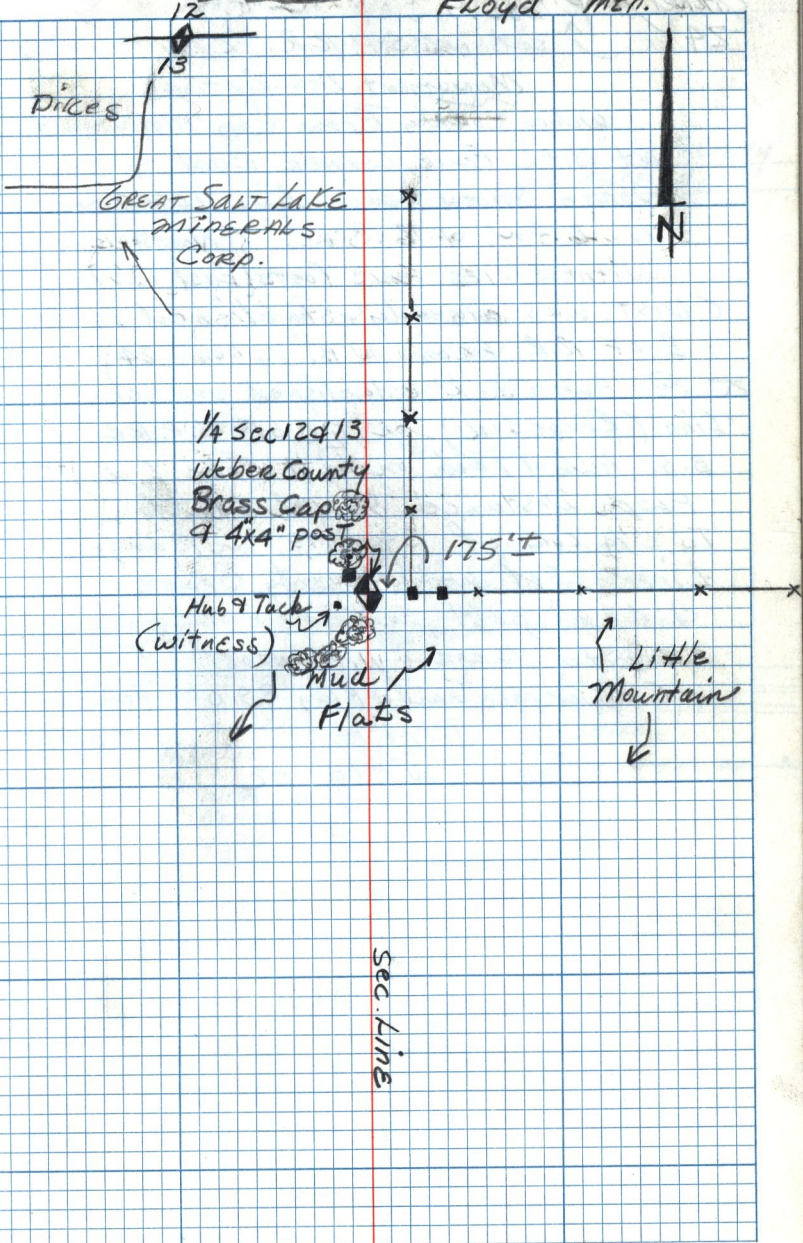
C-54

T.G.N. R. 4W.  
SEC. CORNER Replace

Oct. 8, 82  
HILLIER  
FLOYD

LITTLE  
MOUNTAIN

9



GREAT SALT LAKE  
MINERALS  
CORP.

1/4 SEC 12 & 13  
Weber County  
Brass Cap  
& 4x4" post

Hub & Tack  
(witness)

Mud  
Flats

Little  
Mountain

Sec. Line

N